

User manual

**Concrete chain
saw**

LT-350

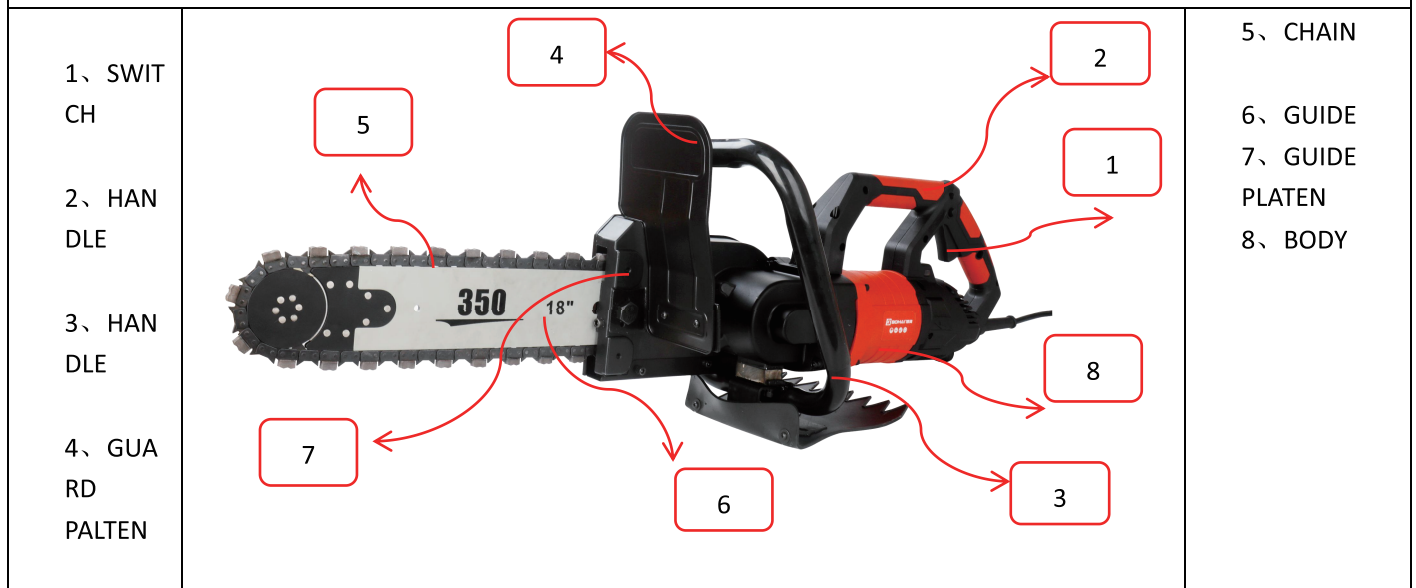
LT-480

Professional tools



Read before use it keep it well .

MOD :LT350 LT480



The appearance of each product varies, please refer to the actual product.

INTRODUCTION



A concrete chain saw is a hand-held power tool that cuts marble and other stone, tile, concrete and similar materials with a rotating diamond chain.

Please make sure you read the instruction manual carefully before use and use this chain saw in strict accordance with the instructions.








| Tool specifications | MOD: LT350 | MOD: LT480 |
|---------------------------------------|---|--|
| VOLTAGE (V) | 220 | 220 |
| FREQUENCY (Hz) | 50/60 | 50/60 |
| POWER INPUT (W) | 3200 | 3200 |
| NO-LOAD SPEED (/min) | 6300 | 6300 |
| SPINDLE THREAD | M8 LEFT | M8 LEFT |
| DIAMOND CHAIN (SPC/NUM. OF SECTIONS) | PITCH 3/8 (19mm) 66SECT PITCH 404(23.2mm) 53SECT | PITCH3/8 (19mm) 78SECT PITCH 404(23.2mm) 63SECT |
| GUIDE (mm) | 18" | 20" |
| 90° MAXIMUM DEPTH (mm) | 370 | 470 |
| WEIGHT (Kg) | 12 | 12.8 |
| PROTECTION CLASS | I | I |
| INSULATION CLASS | E | E |

Notes:

1. For improvement, the specifications contained in this manual may be changed without prior notice.
2. The parameters provided in this manual are based on 220V, if there is a voltage lower or higher than this voltage, the data may be different.

Representative Symbols

The following symbols help you to use this power tool correctly. Remember the symbols and their meanings. Correct knowledge of the symbols will help you to operate the power tool with greater confidence and safety.

| | |
|---|--|
|  | Danger Range! Palms, arms and fingertips must be kept as far away from this range as possible. |
|  | Please wear goggles |
|  | Wear ear muffs. Work noise can damage hearing |
|  | Please wear a dust mask |
|  | Wear insulated work gloves. |
|  | Wear insulated waterproof shoes |
|  | In order to minimise the damage caused by these toxic chemicals, it is important to work in a ventilated environment as much as possible and to wear qualified safety gear when working. |

WARNING: Dust generated during operation of the appliance may contain chemicals that are carcinogenic or harmful to humans.

Example:

Lead contained in paint.

Arsenic and chromium also produce toxic substances when they react with wood.

Attachments

- Wrenches
- Guard plate
- Chain adjusting hexagon
- Water pump
- Water hose

In some countries or special models, the equipment provided may differ slightly from the above information.

Operating Instructions

Checking the power supply voltage

When connecting single-phase AC power, be sure to note that the power supply voltage should be the same as the voltage shown on the nameplate of the tool, so as not to cause overloading of the tool, which will affect the accuracy of the work.



Before installing the guide chain make sure that the plug has been separated from the socket and that the machine is in the de-energised state!!!!



Caution! For your safety and protection, do not attempt to cut workpieces such as tiles until the tool is fully assembled and installed.

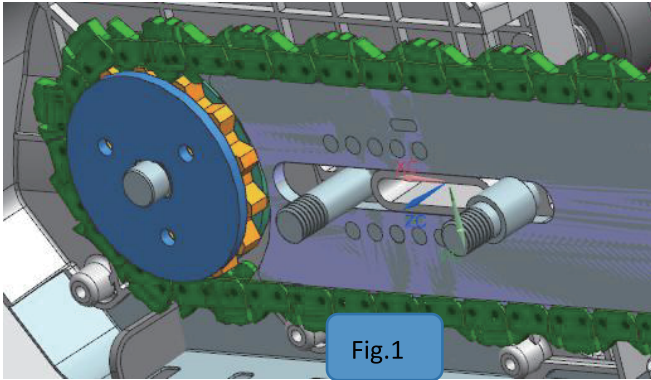
Before operating, please read the operating instructions fully to understand the machine operation and be aware of the dangers that may arise from incorrect operation.

- 1. Install the chain correctly in the guide plate groove, with the other end in the middle of the inner and outer sprocket platen. (Fig.1)**
- 2. Align the holes in the guide plate to the cylinders of the adjusting nut. (Fig. 2)**
- 3. Fix the guide plate to the machine first with the guide plate platen, with the screw band in place, it doesn't have to be very tight. (Fig. 3)**
- 4. Adjust the chain with a hexagonal spanner so that it can be lifted up by 2~4mm (Fig. 4).**
- 5.Lock the guide plate presses in place. (Fig. 5)**
- 6.Guide plate outer pressure plate set to M14 bolts, and installed on the $\Phi 14$ spacer and $\Phi 14$ spring washer, and finally with M14 nuts screwed tightly**



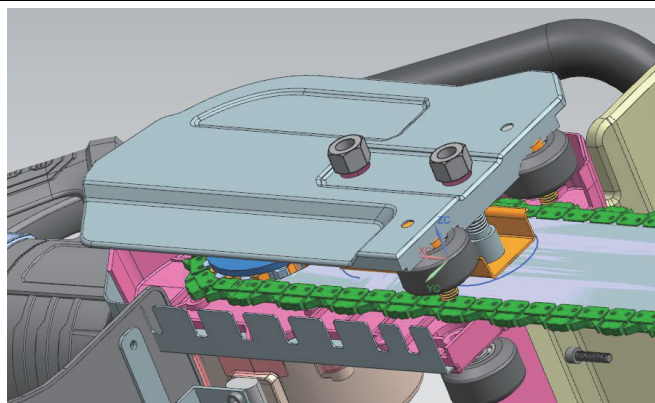
Caution! Voltage of the power supply! The voltage of the power supply must correspond to the voltage indicated on the nameplate of the power tool.

- 1. Check the chain guide before operation. Not only must the chain be correctly fitted, but the chain must be able to rotate without obstruction. A no-load test run of at least 30 seconds must be carried out.**
- 2. Splash/spray on the front of the chain guide.**
- 3. Do not use a chain that has been damaged, deformed, or can vibrate. A damaged chain may break and cause injury.**
- 4. After a period of use, check the wear of the sprockets. Damaged sprockets can damage the chain and may cause injury.**

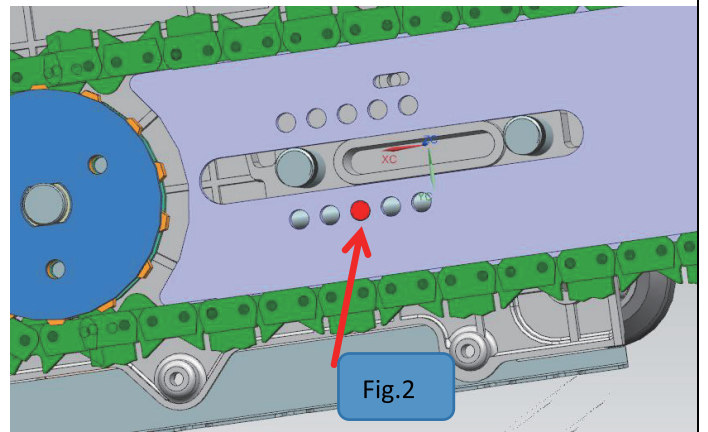


1. Install the chain correctly in the guide plate groove, with the other end in the middle of the inner and outer sprocket platen;

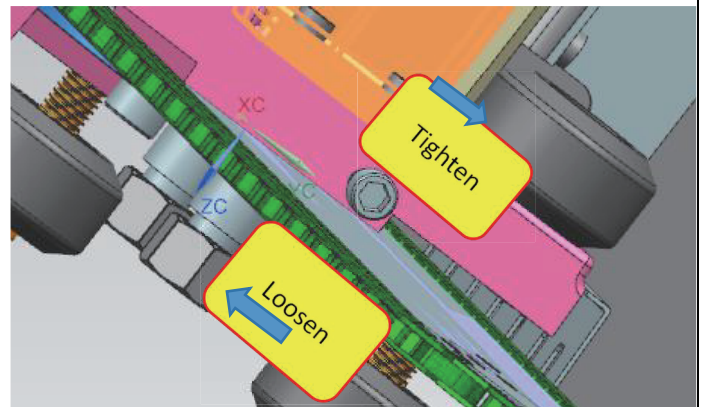
3. Use the guide plate pressure plate to fix the guide plate to the machine first, screws with in place, do not have to be very tight



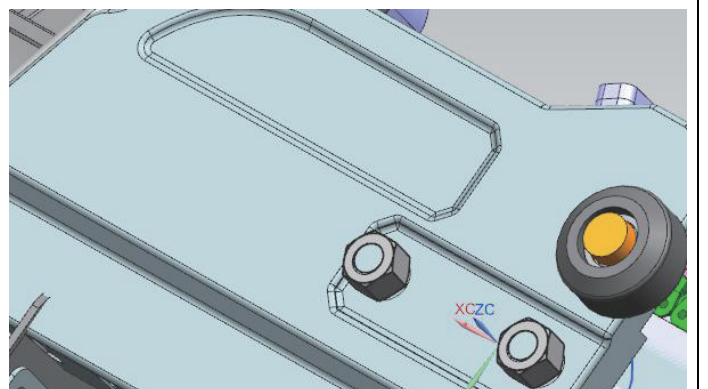
5. Lock the guide plate press.



2. Align the holes of the guide plate with the cylinders of the adjusting nut.



4. Adjust the chain with a hexagonal spanner so that it can be lifted up 2~4mm.



6. The guide plate outside the pressure plate set to M14 bolts, and installed on the $\Phi 14$ spacer and $\Phi 14$ spring washers, and finally screwed with M14 nuts

Carbon Brush Replacement

1. Unscrew the screws of the brush holder cover.



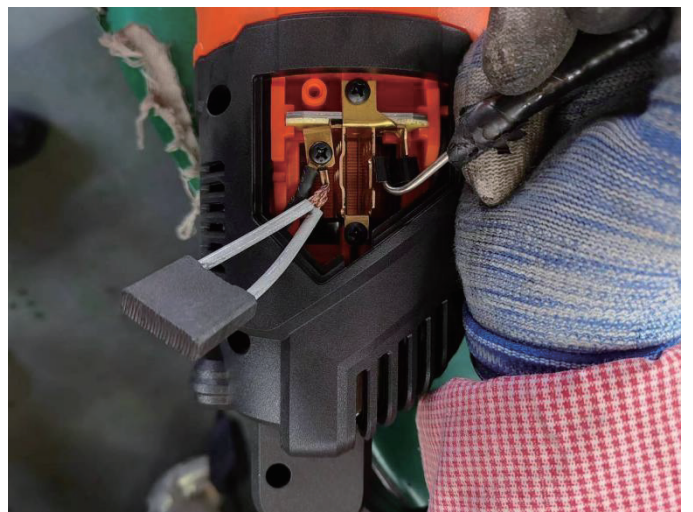
2. Remove the brush grip cover.



3. Pull the disc spring.

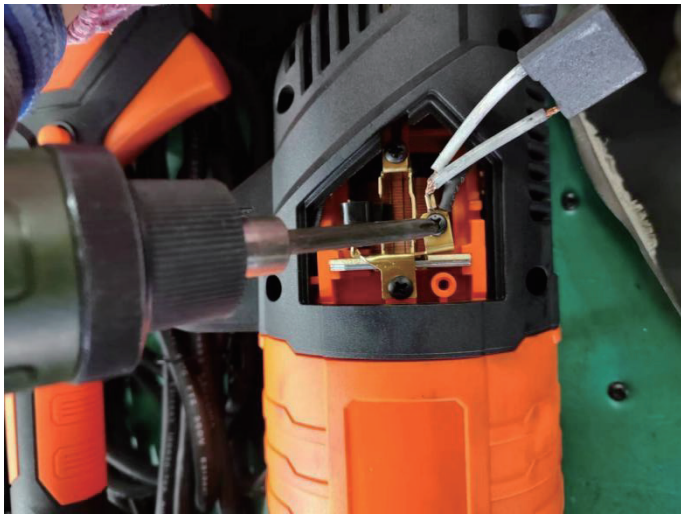


4. Use sharp-nosed pliers to remove the carbon brush socket and take out the carbon brushes.



5. Install the original accessory carbon brushes and insert the carabiners into the brush grips.

6. Cover the brush holder cover and turn the screws to fix the brush holder cover.



Attention! Please check the size of the carbon brushes after a long time working, if the size is less than 7mm, you need to replace the carbon brushes in time. Failure to replace the carbon brushes in time will result in damage to the motor of the machine.



Before replacing the carbon brushes make sure that the plug has been separated from the socket and that the machine is in the de-energised state!!!!

Installation of water pipes for water pumps

1. test whether the pump is normal water, will be such as submersible pumps will be immersed in the motor in a bucket of water, turn on the power, the outlet has a water column, the pump is normal.
2. such as no water column, then shake the pump in the water, the air out of the pump body, it will come out.
- 3, such as the linkage pump, the water inlet pipe and filter into the bucket, boot can be.
- 4、 Link one end of the water pipe to the water pump outlet, and the other end to the machine pre-installed tap.
5. Start the water pump power, the machine chain at the water splash.

Switch operation

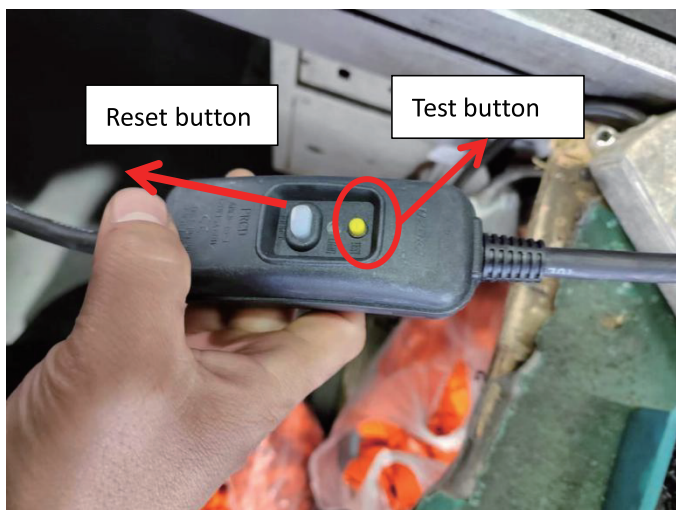
Switch on: Press the anti-self-lock button and then press the on/off button.

Switch off: Release the on/off button



How to use the leakage insurance

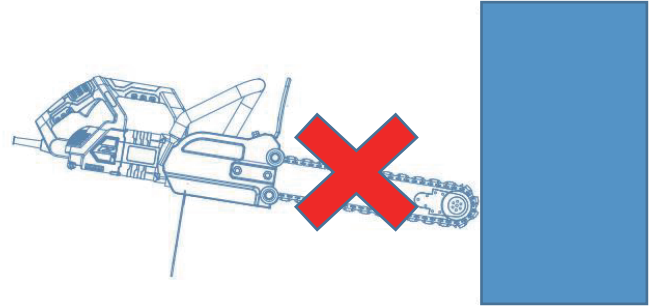
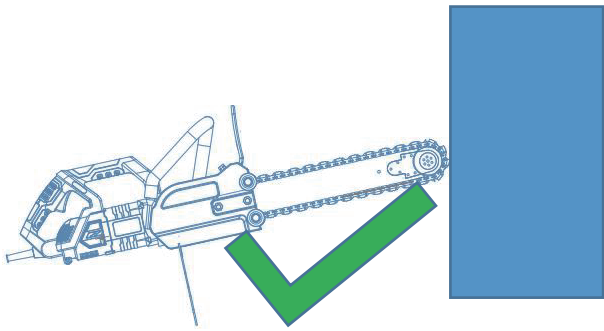
- 1) Plug into the 16A socket, the indicator light is on, press the test key (yellow) can cut off the power.
- 2) Press the recovery key (white) power indicator light, leakage insurance is normal.



Practical Notes

1. Make sure there is water splash at the chain before cutting.
2. Pay attention to the cutting angle when cutting, so that the guide plate chain before the lower half arc to contact the cut object.
3. Every time just before cutting, check the chain and the guide plate with the smoothness and tightness of the chain, too loose chain, easy to detach from the guide plate and sprocket, there is the possibility and risk of accidental injury.
4. Don't be in a hurry to cut the object to be cut, the sharp chain will be easier to cut the object to be cut with a knife mark.
5. According to the knife mark can first cut a straight line, and then repeat the cut, can also cut directly through the wall, and then free down, relying on the weight of the machine, control the machine, you can easily cut.
6. When cutting horizontally, the chain should be adjusted slightly tighter, too loose chain, easy to get out of the guide plate and sprocket, there is a possibility and risk of accidental injury.
7. After each cutting, we should clean and maintain the machine, effective maintenance will extend the

service life of the machine, and can work more efficiently.



Prone to rebound forces

Tool maintenance and care



Warning! Before carrying out a service check on the machine, the plug must be removed from the mains socket.

1. Check the mounting screws. Always check that the mounting screws are securely fastened. Loosening of the screws can cause serious accidents.

2. Check the cable regularly. The power cord is specially prepared and any damage to it should be handled immediately by an authorised maintenance centre.

The power cord used for this tool is of special construction, do not replace the power cord without authorisation, if you need to replace the power cord, please go to authorised maintenance centre to deal with it.

3. Keep the ventilation slots clean and smooth. Often remove dust, oil, and prevent debris from entering.

4. Replace the carbon brushes. When the carbon brushes wear to a certain length, the machine will stop, once this happens, you should replace the carbon brushes in time, in order to ensure the safety and reliability of the product. The carbon brushes should be checked and replaced by authorised maintenance centre to prevent electric shock and ensure the long-term safe use of the tool.

5. Repair must be carried out by the authorised repair centre, and only accessories and parts can be used.

Cleaning. Avoid wiping plastic parts with solvents that cause damage to the plastic. A soft cloth slightly moistened with soapy water is recommended.

1. Avoid shocks, impacts or grease on the tool.

2. Regularly add "Bohai" specified gear lubricant, effective lubrication can extend the life of the machine.



Do not allow the motor to get wet, and do not put the entire body into the water, as this may cause motor failure and electric shock!

Environment Protection



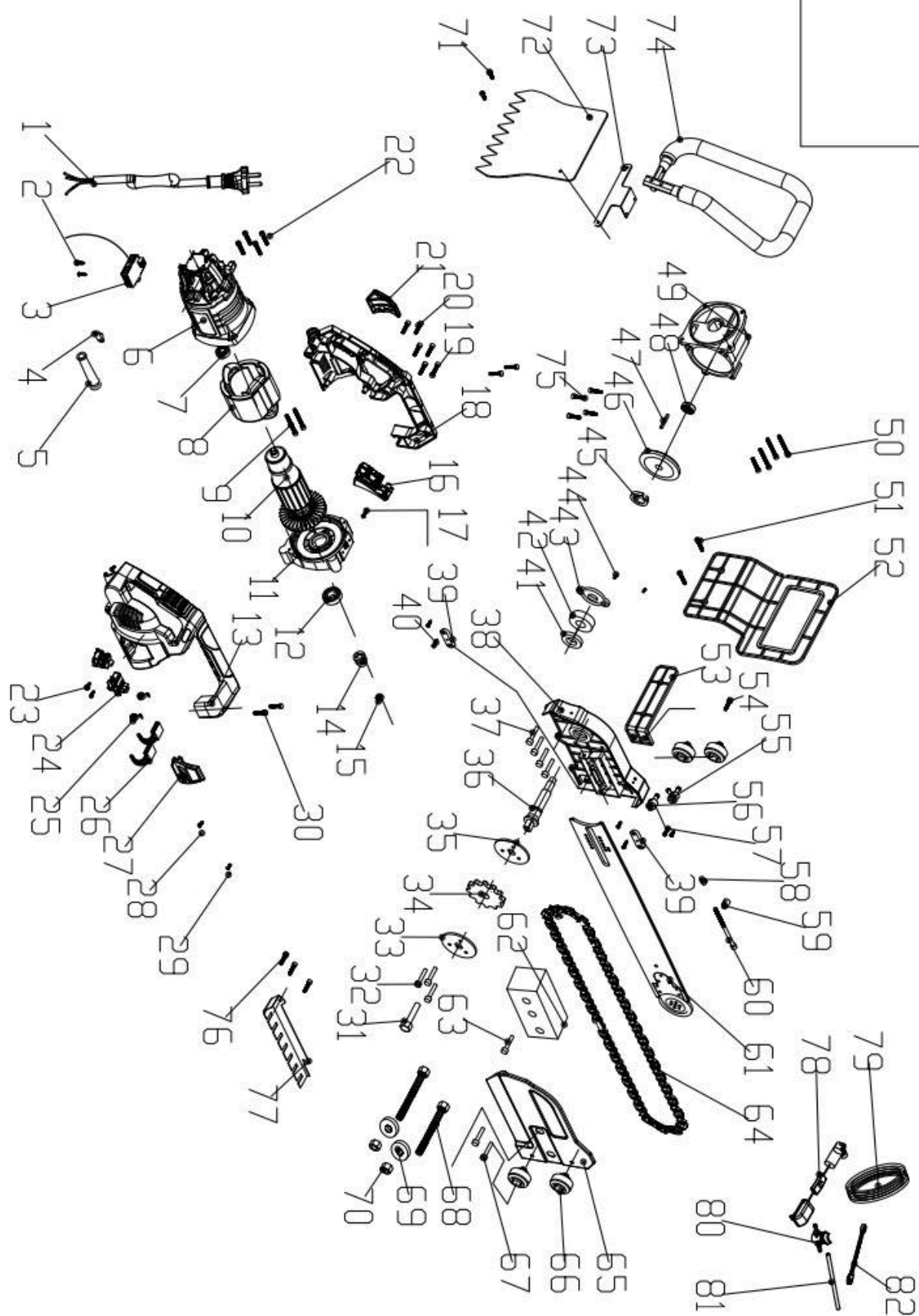
End-of-life power tools and accessories contain a lot of valuable raw materials that can also be recycled. Dust from grinding or cutting can contain hazardous substances and should not be dumped as ordinary waste, but should be disposed of in special waste recycling stations.

Warranty Card

Dear customers, users: purchase products, warranty service provisions are as follows

1. I. Warranty period:
2. Under normal use, within three months from the date of purchase, and the rotor commutator wear $< 0.2\text{mm}$, indeed due to the quality of the tool caused by internal damage, belongs to the scope of warranty.
3. Second, in the warranty period occurs in the following cases, does not belong to the scope of warranty
4. 1. No valid legal documents (invoice) to prove the date of purchase.
5. 2. Damage caused by natural wear and tear and overloading.
6. 3. Damage caused by improper carrying, transport, storage.
7. 4. Products that have been opened, repaired, replaced or modified on their own.
8. 5. Tool models that do not meet national standards and cannot be sold domestically.
9. 6. Due to misuse, beyond the scope of use of the tool, not in accordance with the provisions of the instructions for the use of the situation.
10. 7. Damage caused by lack of proper maintenance.
11. Note: The company reserves the right to modify the above provisions, and the warranty service in the case of no violation of national laws, has the final interpretation.)
12. Damage caused by natural wear and tear, overloading.
13. Damage caused by improper carrying, transport and storage.
14. Products that have been opened, repaired, replaced with parts or modified by ourselves.
15. Tool models that do not meet national standards and cannot be sold domestically.
16. Due to misuse, beyond the scope of use of the tool, not in accordance with the provisions of the instructions for use.
17. Damage caused by lack of proper maintenance.

Note: The company reserves the right to modify the above provisions, and the warranty service in the case of no violation of national laws, has the final interpretation.



| NO. | NAME | QTY | NO. | NAME | QTY |
|-----|-----------------------------------|-----|-----|----------------------------|-----|
| 1 | cable | 1 | 43 | 6204 Bearing Gland | 1 |
| 2 | screw ST4.2*10 | 1 | 44 | screw M6*16 | 2 |
| 3 | soft start | 1 | 45 | spring 20 | 1 |
| 4 | pressure plate | 7 | 46 | Large Bevel Gear (50T M82) | 1 |
| 5 | cable sheath | 1 | 47 | 4*18 KEY | 1 |
| 6 | body | 1 | 48 | 6201RS rolling bearing | 1 |
| 7 | 629RS rolling bearing | 1 | 49 | head housing | 1 |
| 8 | stator | 1 | 50 | M5*20 screw | 4 |
| 9 | screw ST5*90+washer 2mm | 1 | 51 | screw M5*10 | 2 |
| 10 | rotor | 1 | 52 | guard plate | 1 |
| 11 | middle cover | 1 | 53 | Guard plate base | 1 |
| 12 | 6202 rolling bearing | 1 | 54 | M5*10 screw | 2 |
| 13 | right handle | 1 | 55 | Outer piece spout | 1 |
| 14 | Small bevel gears (13T M22 H23.3) | 1 | 56 | Inner piece spout | 1 |
| 15 | M8 nut | 1 | 57 | M5*14 screw | 2 |
| 16 | switch | 1 | 58 | M6 NUT | 1 |
| 17 | screw ST4*8 | 1 | 59 | Adjustment NUTM6 | 1 |
| 18 | left handle | 1 | 60 | screw M6*100 | 1 |
| 19 | screw ST4.2*10 | 2 | 61 | guide 350 | 1 |
| 20 | screw ST4.2*25 | 2 | 62 | Guide Plate Press | 1 |
| 21 | Left Carbon Brush Cover | 1 | 63 | screw M6*25 | 1 |
| 22 | screw M5X35 | 4 | 64 | diamond chain | 1 |
| 23 | screw ST4.2*10 | 4 | 65 | Guide plate outer platen | 1 |
| 24 | brush holder | 2 | 66 | rollwheel | 4 |
| 25 | spring 7mm | 2 | 67 | screw M6*25 | 4 |
| 26 | carbon brush 7.5*24 | 2 | 68 | screw M14*60 | 2 |
| 27 | right Carbon Brush Cover | 1 | 69 | Φ14 gasket | 1 |
| 28 | screw M4*10 | 2 | 70 | M14 NUT | 2 |
| 29 | screw M4*10 | 1 | 71 | M5*8 screw | 2 |
| 30 | screw M5*16 | 2 | 72 | mudguard | 1 |
| 31 | screw M8*16 | 1 | 73 | Mudguard fixing plate | 1 |
| 32 | screw M6*16 | 3 | 74 | handle | 1 |
| 33 | Sprocket outer plate | 1 | 75 | screw M6*25 | 4 |
| 34 | sprockets | 1 | 76 | screw M6*10 | 3 |
| 35 | Sprocket inner plate | 1 | 77 | Chain guards | 1 |
| 36 | sprindle | 1 | 78 | water pump | 1 |
| 37 | screw M6X30 | 4 | 79 | PVC pipe 6*8 | 1 |
| 38 | front cover | 1 | 80 | kick | 1 |
| 39 | Front cover gasket | 1 | 81 | PVC pipe 6*8 | 1 |
| 40 | M6 screw | 2 | 82 | 2lspannet | 1 |
| 41 | Skeleton Seal (Φ26*Φ20*4) | 1 | 83 | spanner | 1 |
| 42 | 6204 rolling bearing | 1 | | | |

